

chris hamriding

lettings & estate agents



9 Hangar Way, Congleton, CW12 1TR

£572,995

****Show Homes Now Open****

Welcome to The Wiltshire at Woodland Manor, a beautiful new housing development by Castle Green Homes nestled alongside the picturesque River Dane in Congleton, Cheshire. Offering a stunning selection of 3 and 4 bedroom homes, Woodland Manor combines modern living with the tranquil charm of waterside living. The development is designed to provide a welcoming community atmosphere, featuring unique yet stylish homes that blend seamlessly into the natural landscape. With its exceptional location and thoughtfully designed properties, Woodland Manor is the perfect place to call home.

The Wiltshire at Woodland Manor in Congleton, Cheshire is a truly magnificent detached family home. Living and entertainment space is plentiful with an impressive 30ft open plan kitchen/dining/family area boasting French doors that lead out into the garden, enabling the outside to blend beautifully with the interior. There is a separate lounge with a beautiful bay window to complete the ground floor. Upstairs there is a luxurious and imposing master suite, along with an impressive guest suite and two other generously sized bedrooms and family bathroom. Finally, the cloakroom, utility area and an integrated double garage are desirable features fit for modern family life. Are you ready to make the Wiltshire your new home in Congleton?!

Call us here at Chris Hamriding Estate Agents to find out more, we'd love to meet you!

Lounge 17'2 x 11'9 (5.23m x 3.58m)

Cloakroom 5'1 x 3'7 (1.55m x 1.09m)

Kitchen/ Family/ Dining 33'10 x 13'3 (10.31m x 4.04m)

Utility 6'5 x 5'7 (1.96m x 1.70m)

Garage 16'8 x 20'8 (5.08m x 6.30m)

Bedroom one 14'4 x 11'9 (4.37m x 3.58m)

Dressing area 10' x 7'8 (3.05m x 2.34m)

Ensuite 8'4 x 7'8 (2.54m x 2.34m)

Bedroom two 13'3 x 11'3 (4.04m x 3.43m)

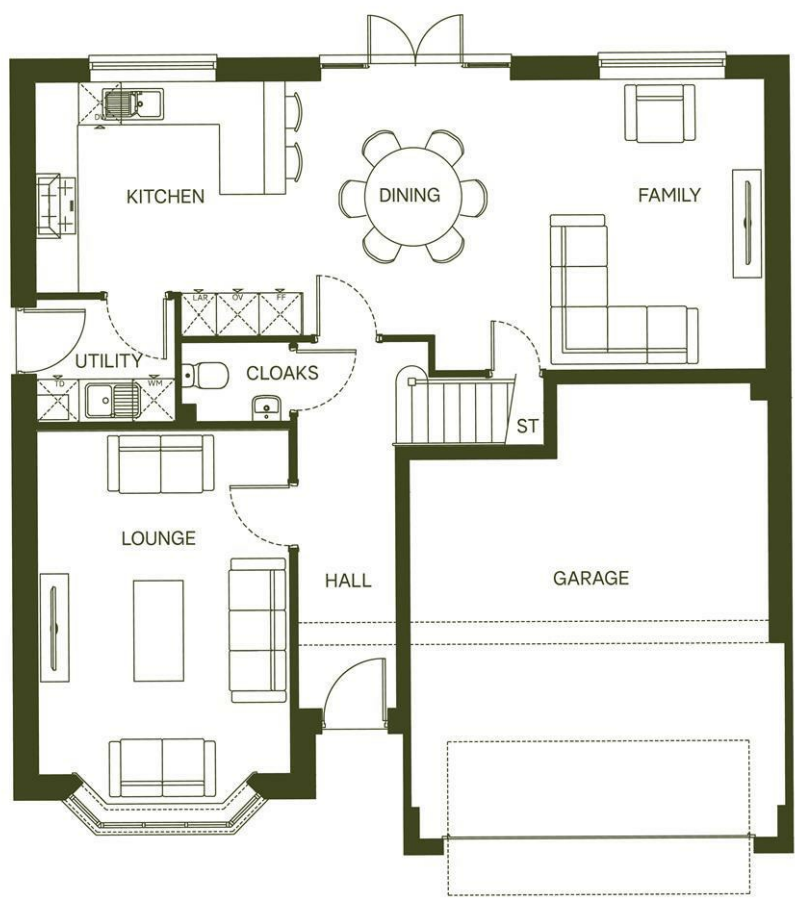
Ensuite two 8'6 x 4'11 (2.59m x 1.50m)

Bedroom three 10'9 x 9'5 (3.28m x 2.87m)

Bedroom four 11'2 x 9'5 (3.40m x 2.87m)

Bathroom 7' x 6'4 (2.13m x 1.93m)

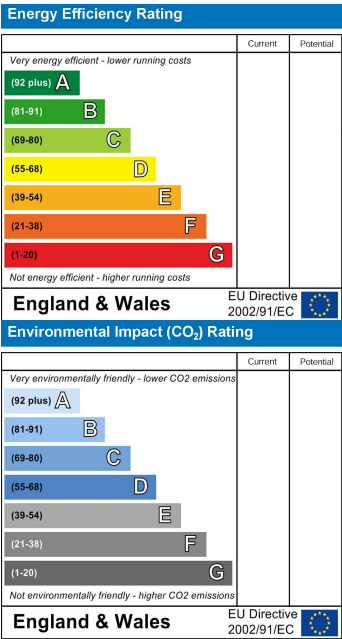
Floor Plan



Area Map



Energy Efficiency Graph



NOTICE Chris Hamriding Lettings & Estate Agents for themselves and for the vendor or lessors of this property whose agents they are given notice that: (i) the particulars are set out as a general outline only for the guidance of intending purchasers or lessees, and do not constitute, nor constitute part of, an offer of contract, (ii), all descriptions, dimensions, references to condition and necessary permissions for use and occupation, and other details are given in good faith and are believed to be correct but any intending purchasers or tenants should not rely on them as statement or representation of fact but must satisfy themselves by inspection or otherwise as to the correctness of each of them, (iii) no person in the employment of Chris Hamriding Lettings & Estate Agents has any authority to make or give any representation or warranty whatever in relation to this property.